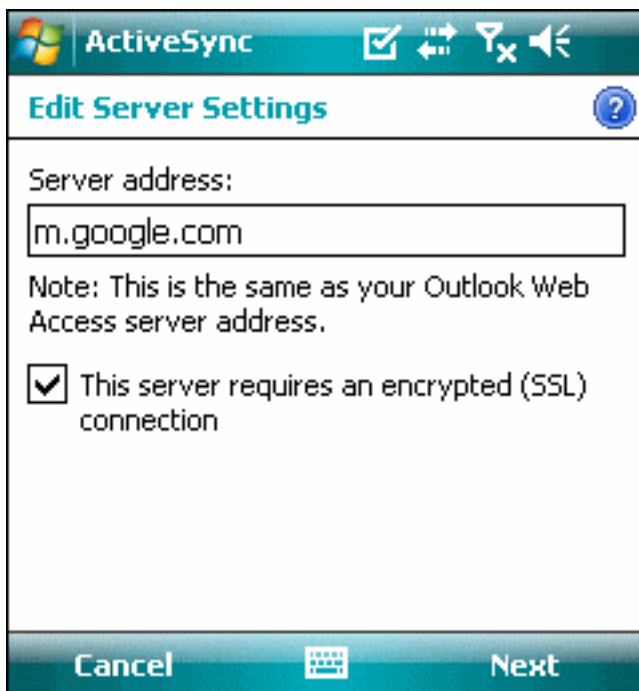
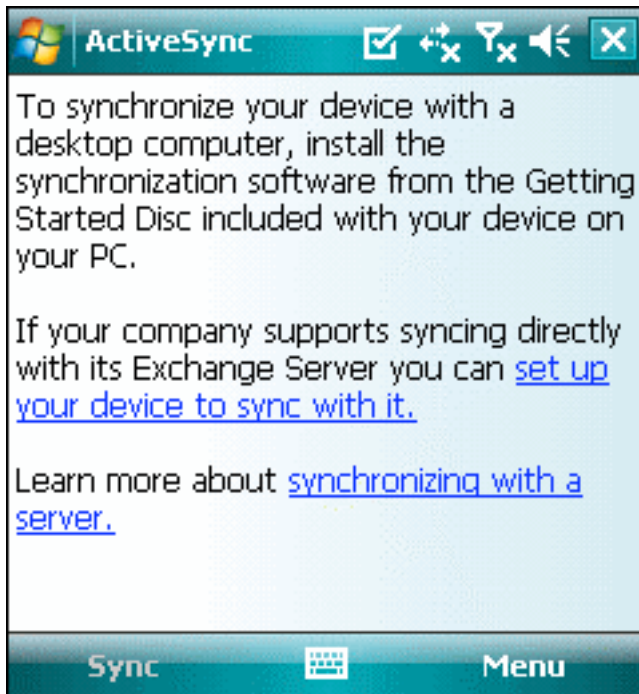


Setting Up Your Windows Mobile Phone for Google Sync

To set up Google Sync on your Windows Mobile device, please follow the steps below. **Important Note:** Make sure that you have backed up any Contacts and Calendars from your phone to your computer before proceeding.

Getting Started

1. Open the Microsoft Exchange **ActiveSync** application on your device's home screen.
2. Click **Set up your device to sync with it.**
3. Enter **m.google.com** as the server address.
4. Ensure that the **SSL** option is selected.



Sign In to Your Google Account

5. Click **Next**.
6. Enter your full Google Account email address as the **User name**.
7. Enter your Google Account password as the **Password**. If you're a [2-step verification user](#), please use an [application-specific password](#) instead.
8. Leave the **Domain** field empty. If your device requires you to enter a domain name, enter **google**.
9. Click **Next**.
10. Check **Contacts**, **Calendar**, or **Email**, depending on which you'd like to sync. (Tasks is not supported and will lead to an error if checked.)
11. Click **Finish**.



ActiveSync

Edit Server Settings

User name:

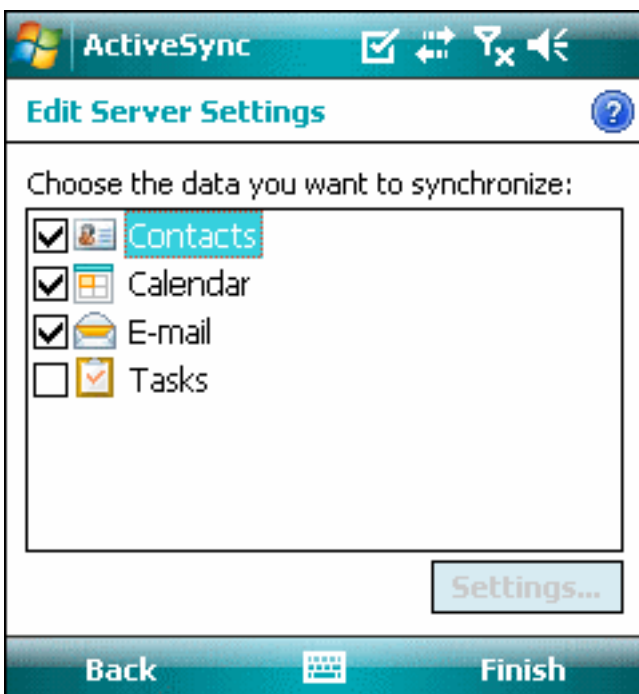
Password:

Domain:

Save password
(required for automatic sync)

Advanced...


Back Next





ActiveSync


Edit Server Settings

Choose the data you want to synchronize:

 **Contacts**

 Calendar

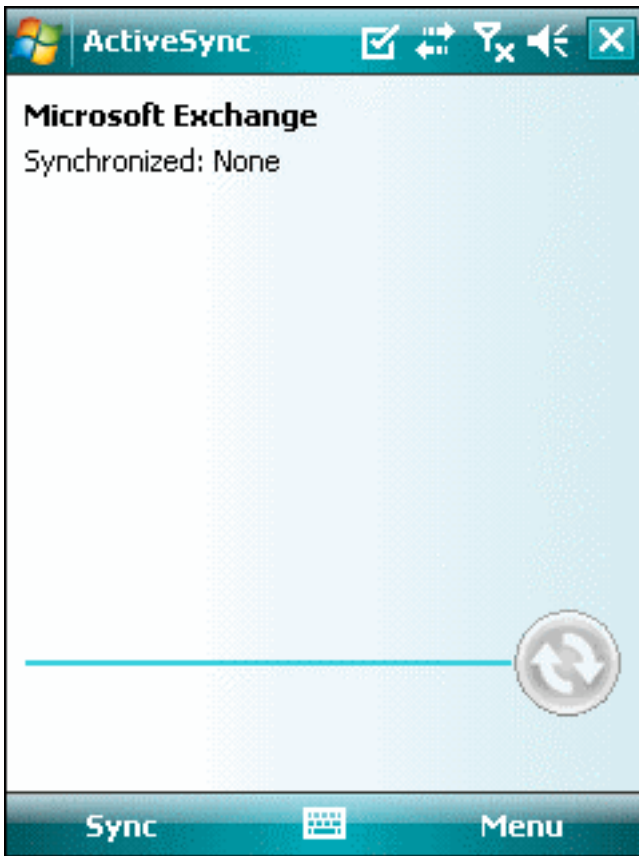
 E-mail

 Tasks

Settings...

Back Finish

12. Press the **Sync** softkey on the left to synchronize.



You've now set up Google Sync for your Windows Mobile device.

Tip: If your business, school, or organization uses Google Apps, your administrator will first need to [enable Exchange ActiveSync](#) before you can take advantage of this feature.